

Baritone Sax.

COTTONTAIL

DE 14

Duke Ellington

Transcribed by David Berger and Brent Wallarab

A Fast swing ♩ = 234

First two staves of section A. The first staff begins with a treble clef, a key signature of one sharp (F#), and a common time signature (C). The music starts with a dynamic marking of *mf*. The second staff continues the melodic line with various articulations and dynamics.

B

Two staves of section B. The first staff continues the melodic line. The second staff features a dynamic marking of *f* at the end.

C

Two staves of section C. The first staff features a long, sweeping melodic line with a slur. The second staff continues this line, ending with a dynamic marking of *f*.

D

One staff of section D. The music features a melodic line with a dynamic marking of *mf* and a trill (tr) at the end.

E

Ten. solo

F

G

One staff containing sections E, F, and G. Each section is represented by a thick black bar on the staff, with a circled number '8' above each bar, indicating an 8-measure rest.

H

I

J

One staff containing sections H, I, and J. Each section is represented by a thick black bar on the staff, with a circled number '8' above each bar, indicating an 8-measure rest.

Copyright © 1940 (Renewed 1968) EMI ROBBINS CATALOG INC.

All Rights Controlled by EMI ROBBINS CATALOG INC. (Publishing) and WARNER BROS. PUBLICATIONS U.S. INC. (Print)

All Rights Reserved including Public Performance for Profit

JLC9803

K **L** **M** (end Ten. solo) **N**

Musical staff K-N with octaves marked '8'. The staff contains four measures, each with a thick black bar representing an octave. The key signature is one sharp (F#).

O solo

Musical staff O with solo marking. The staff contains two lines of music. The first line has a B7 chord marking. The second line has A7 and D7 chord markings. The key signature is one sharp (F#).

P

Musical staff P with a sixteenth note and dynamic marking *f*. The staff contains two lines of music. The key signature is one sharp (F#).

Q

Musical staff Q with a first finger marking '1'. The staff contains two lines of music. The key signature is one sharp (F#).

R

Musical staff R with a triplet marking '3'. The staff contains two lines of music. The key signature is one sharp (F#).

S

Musical staff S. The staff contains two lines of music. The key signature is one sharp (F#).

JLC9803

T

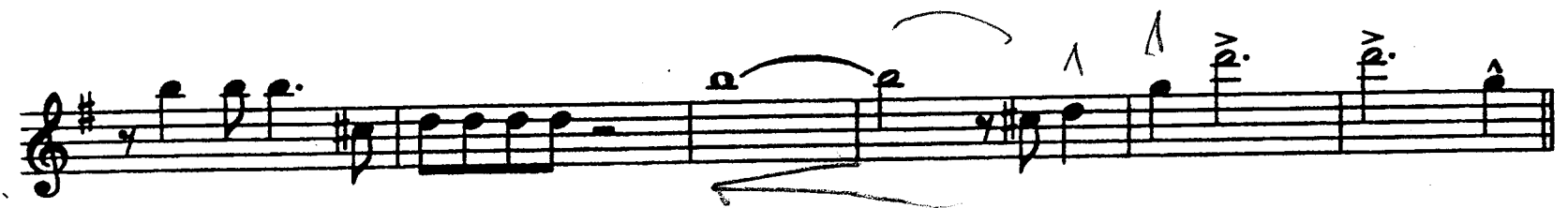
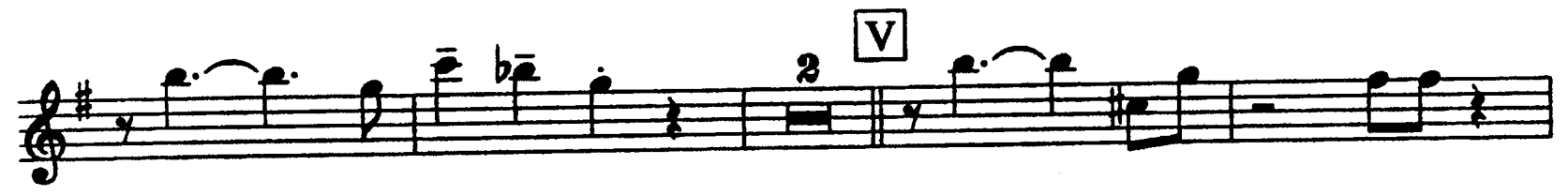


U

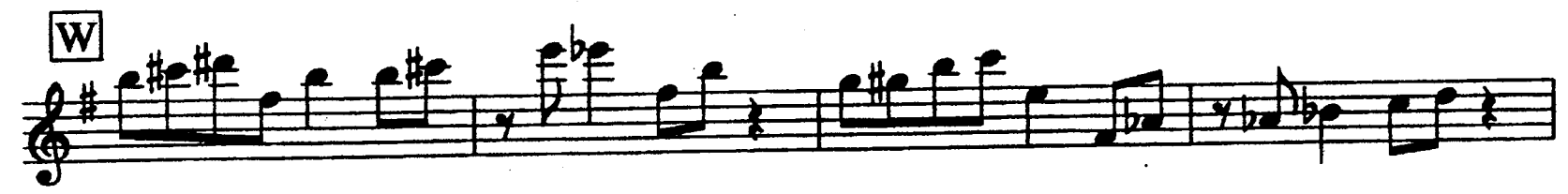
shout
chorus



V



W



X

