

1st Tenor Sax.

# COTTONTAIL

# DE 14

Duke Ellington

Transcribed by David Berger and Brent Wallarab

**A** Fast swing ♩ = 234

8 **B** 7

**C**

**D** 3

**E** Solo

C Am7 Dm7 G7 C Am7 Dm7 G7

C7 3 F Fm C A7 3 D7 G7

**F** C Am7 Dm7 G7 (vib.) C 3 Am7 Dm7 G7

C7 F (vib.) Fm C

Copyright © 1940 (Renewed 1968) EMI ROBBINS CATALOG INC.

All Rights Controlled by EMI ROBBINS CATALOG INC. (Publishing) and WARNER BROS. PUBLICATIONS U.S. INC. (Print)

JLC9803

All Rights Reserved including Public Performance for Profit

**G**

Musical notation for section G, consisting of two staves. The first staff begins with a treble clef, a key signature of one sharp (F#), and a 2/4 time signature. It contains a triplet of eighth notes starting on G4, followed by a quarter note A4, and another triplet of eighth notes starting on G4. Above the first and third triplets are the chord symbols E7 and A7, respectively. The second staff continues with a triplet of eighth notes starting on G4, followed by a quarter note Bb4, and another triplet of eighth notes starting on G4. Above the first and third triplets are the chord symbols D7 and G7, respectively.

**H**

Musical notation for section H, consisting of two staves. The first staff begins with a treble clef, a key signature of one sharp (F#), and a 2/4 time signature. It contains a quarter rest, followed by a triplet of eighth notes starting on G4, a quarter note A4, and another triplet of eighth notes starting on G4. Above the first and third triplets are the chord symbols Am7 (vib.) and Dm7 G7. The second staff continues with a quarter rest, followed by a triplet of eighth notes starting on G4, a quarter note A4, and another triplet of eighth notes starting on G4. Above the first and third triplets are the chord symbols C, Am7, Dm7, and G7.

Musical notation for section I, consisting of two staves. The first staff begins with a treble clef, a key signature of one sharp (F#), and a 2/4 time signature. It contains a quarter rest, followed by a triplet of eighth notes starting on G4, a quarter note A4, and another triplet of eighth notes starting on G4. Above the first and third triplets are the chord symbols C7, F, Fm, and C. The second staff continues with a quarter rest, followed by a triplet of eighth notes starting on G4, a quarter note A4, and another triplet of eighth notes starting on G4. Above the first and third triplets are the chord symbols G7+5. The second staff also includes the instruction "growl" above a note and "normale" above a later note.

Musical notation for section J, consisting of two staves. The first staff begins with a treble clef, a key signature of one sharp (F#), and a 2/4 time signature. It contains a quarter rest, followed by a triplet of eighth notes starting on G4, a quarter note A4, and another triplet of eighth notes starting on G4. Above the first and third triplets are the chord symbols C, Am7, Dm7, and G7. The second staff continues with a quarter rest, followed by a triplet of eighth notes starting on G4, a quarter note A4, and another triplet of eighth notes starting on G4. Above the first and third triplets are the chord symbols C, Am7, Dm7, and G7.

Musical notation for section K, consisting of two staves. The first staff begins with a treble clef, a key signature of one sharp (F#), and a 2/4 time signature. It contains a quarter rest, followed by a triplet of eighth notes starting on G4, a quarter note A4, and another triplet of eighth notes starting on G4. Above the first and third triplets are the chord symbols E7 and A7. The second staff continues with a quarter rest, followed by a triplet of eighth notes starting on G4, a quarter note A4, and another triplet of eighth notes starting on G4. Above the first and third triplets are the chord symbols D7 and G7.

L

C Am7 Dm7 G7 C Am7 Dm7 G7

C7 Fb F#° C Am7 Dm7 G7+5

M

C 7 N 8 O (Bari. solo) 8 P (Pno. solo) 7

Q SOLI

R

S

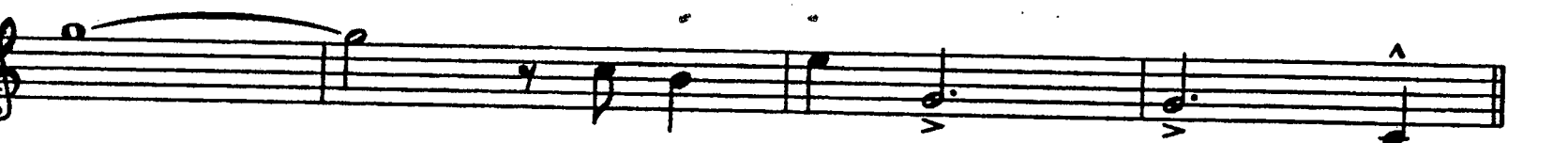
T



U



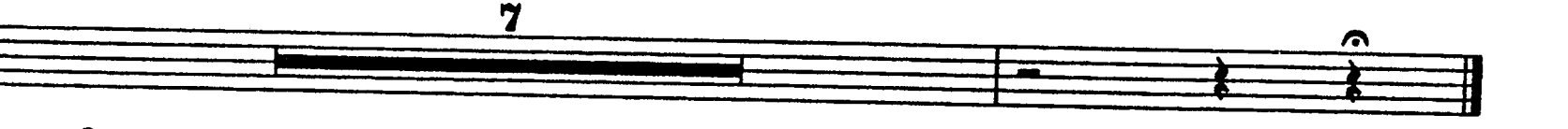
V



W



X



JLC9803 1st TENOR

(4)

COTTONTAIL